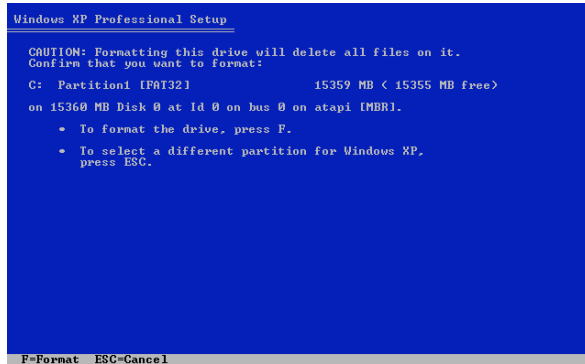


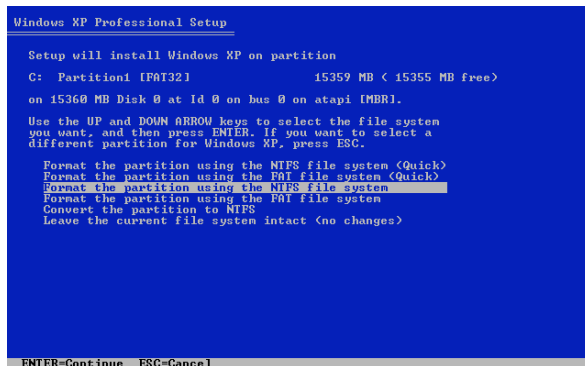
Installing Windows on a 303 System

1. First, install Windows XP SP 1 from the CD or DVD.
2. Be sure to format the drive you are installing onto. Unless this is a brand new disc, use the full NTFS format command (not the quick).

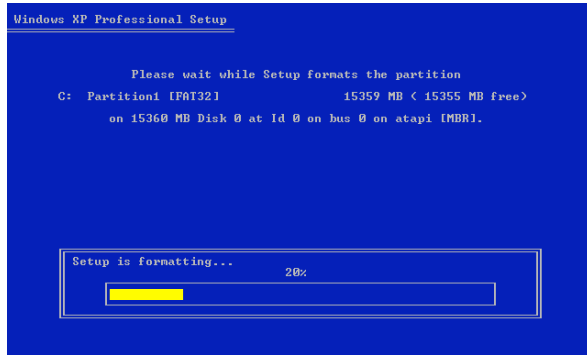


Some notes go in this place.
Go ahead and put things
here if you want them to go
somewhere

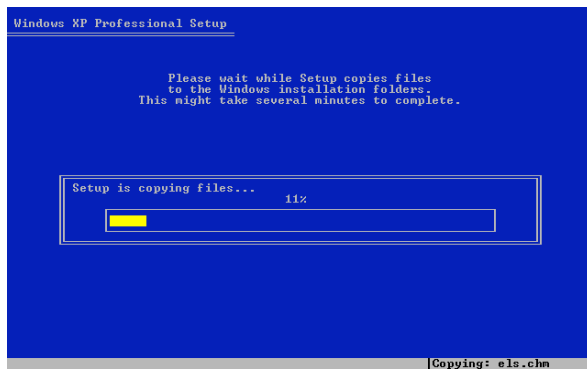
3. Go ahead and hit F after you select the correct partition.



4. The Windows setup program formats the partition.



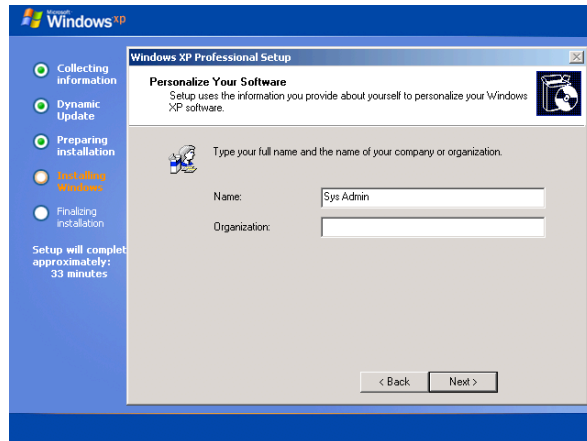
5. Then, the setup program copies a few files to the drive and restarts.



6. Now, it should reboot into windows installer and continue installation. (The Win Installer has the Windows XP logo in the upper left corner of the screen.)



7. Enter the Name and Organization into the field provided.
(Use System Administrator for the user, and leave the Organization blank)



8. Set the proper date and time. Be sure to set the appropriate time zone too.

